
Macintosh 10.5 USB Driver

(Install & Data Connection Manual)

V 1.0E

2008.03.30



AnyDATA CDMA Modem Series Reference Design Specification**Copyright © 2000~2008 AnyDATA Corp. All Rights Reserved.**

Any part of this document may not be distributed, communicated, reproduced or transmitted in any form or by any means, electronic or mechanical or otherwise, for any purpose, without the permission of AnyDATA Corp.

This document can be subjected to revision without further notice.

Contact Address**AnyData.Net Inc.(Korea)**

DaeGo Bldg, 8 th., 1591-10

Kwanyang-dong, Dongan_gu,

Anyang City, Kyunggi-do Korea.

<http://www.anydata.co.kr>e-mail: infodata@anydata.net

Rep: +82-31-380-7100

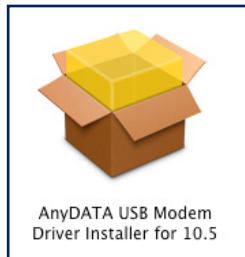
Fax: +82-31-476-6021

Contents

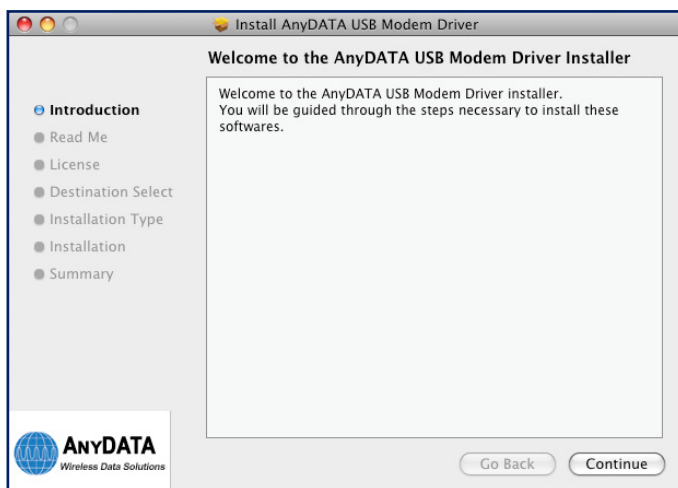
1. Driver Install	4
2. Data Connection	8

1. Driver Install

1. Delete all if AnyDATA communication device is connected to Macintosh computer.
2. Insert CD or DVD into Macintosh and then double-click the installer icon below.

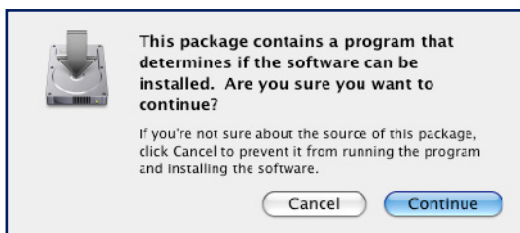


3. Following introduction message will appear and click 'Continue'.

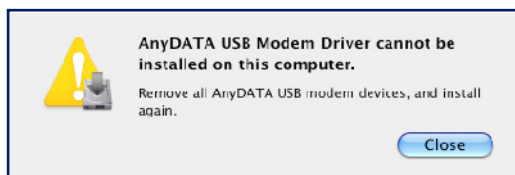


4. When following screen appears, click 'Continue'.

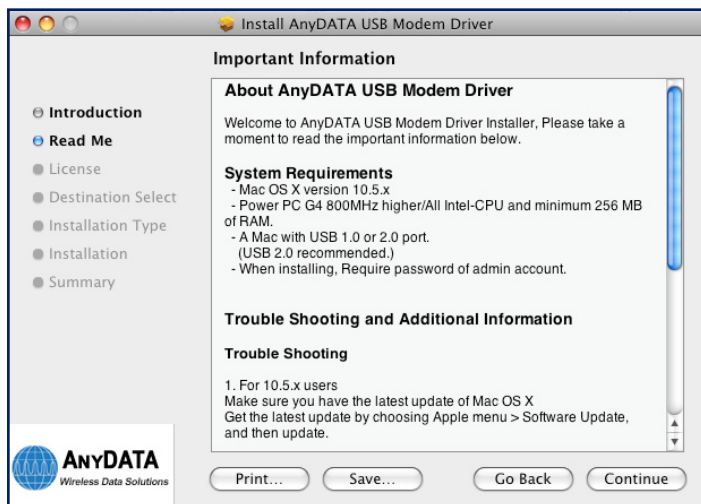
It will not continue if your computer operating system is not Mac OS X 10.5.x.



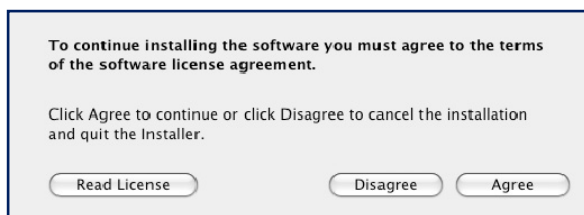
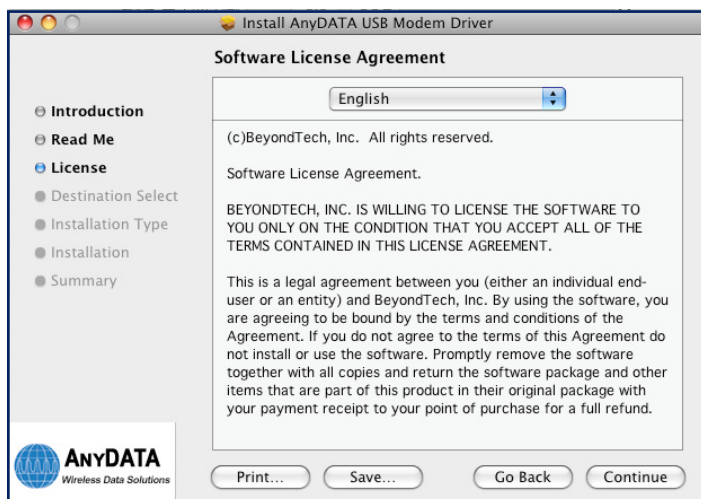
When AnyDATA communication device is connected to computer, the following warning message will appear and you can not continue further, so please remove the device and install again.



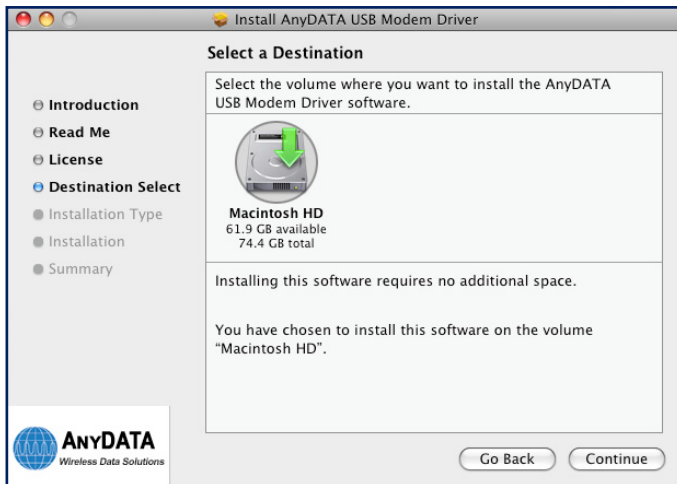
5. Please read the important information carefully when following screen appears..



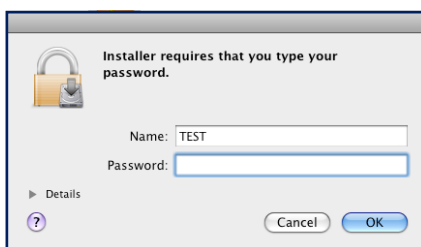
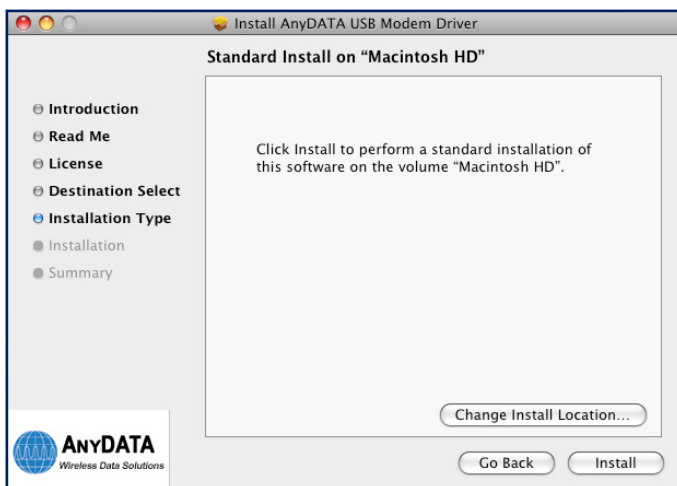
6. Once you agree to 'Software license agreement', click Continue.



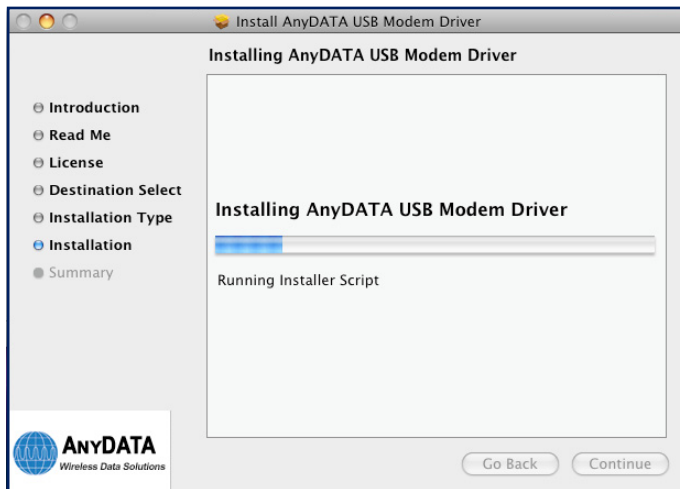
7. Volume which the driver is to be installed will be selected automatically.



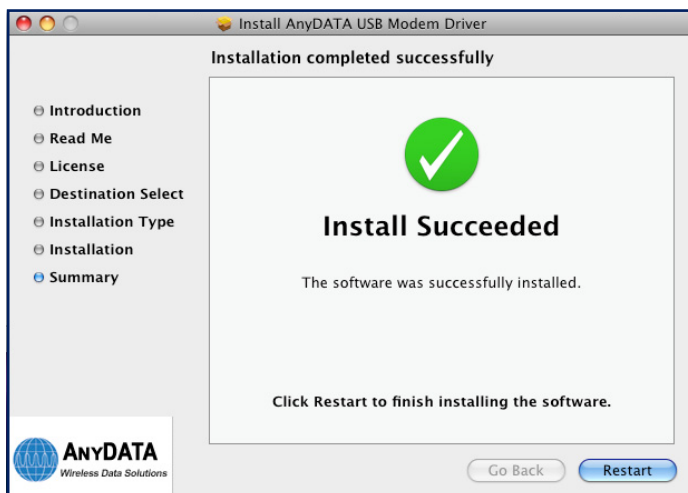
8. Once you click 'Install', administrator's name and password are prompted. Enter the administrator's name and password, and then click 'OK'.



9. The driver is being installed

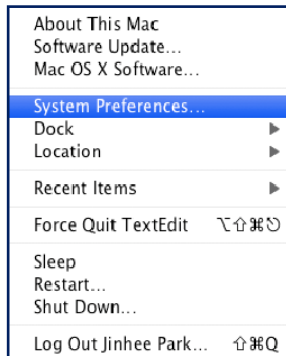


10. Restart Macintosh when the driver was successfully installed.



2. Data Connection

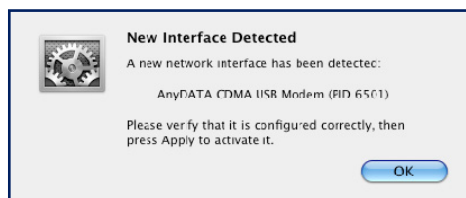
1. Connect AnyDATA communication device into Macintosh.
2. Select 'System Preferences' from the 'apple' menu.



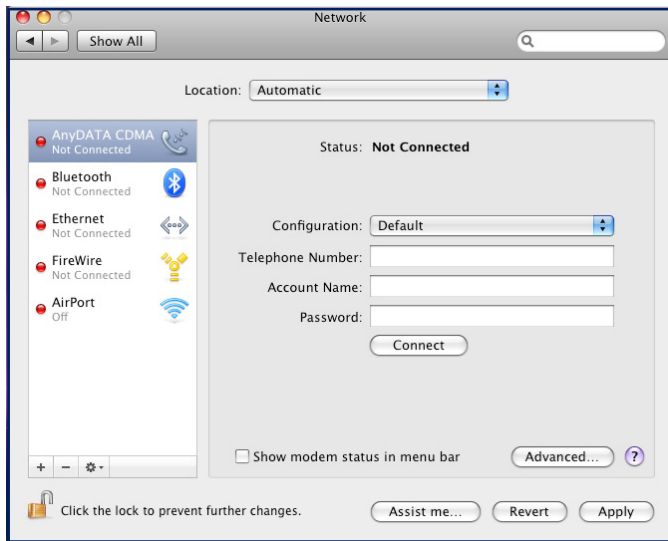
3. when following screen appears, select 'Network'



Once driver is installed and communication device is connected, following notification will appear.

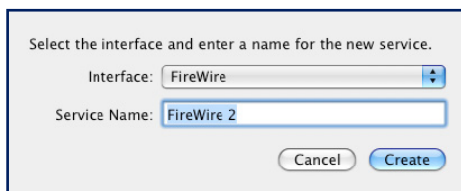


4. AnyDATA communication device will be displayed as below. Select this device.

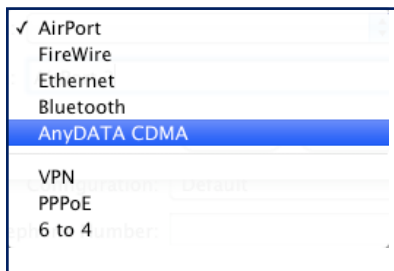


If the AnyDATA communication device is not shown above, click '+' located bottom left of the screen.

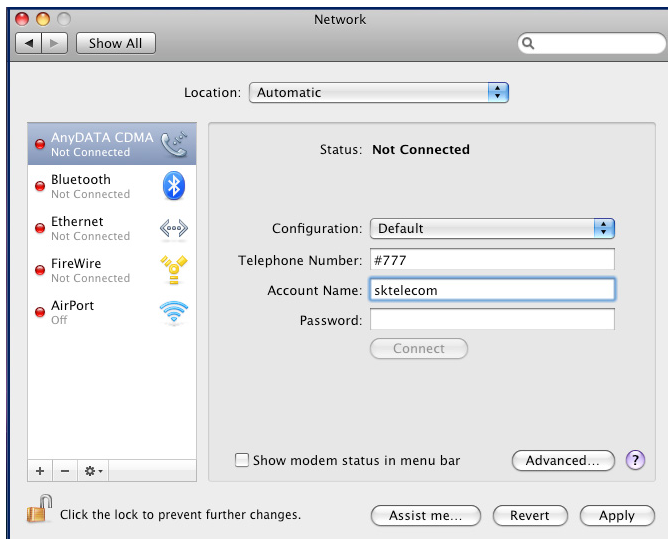
Following screen will appear.



5. Select AnyDATA communication device from the menu in 'Interface'.

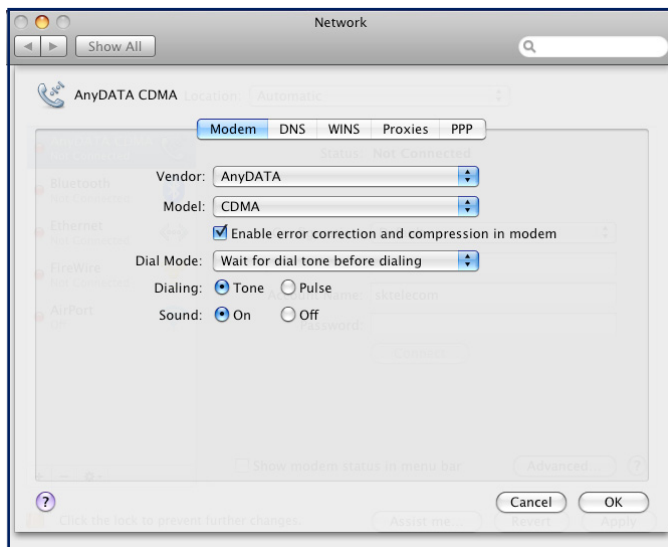


6. When following screen appears, enter the account information

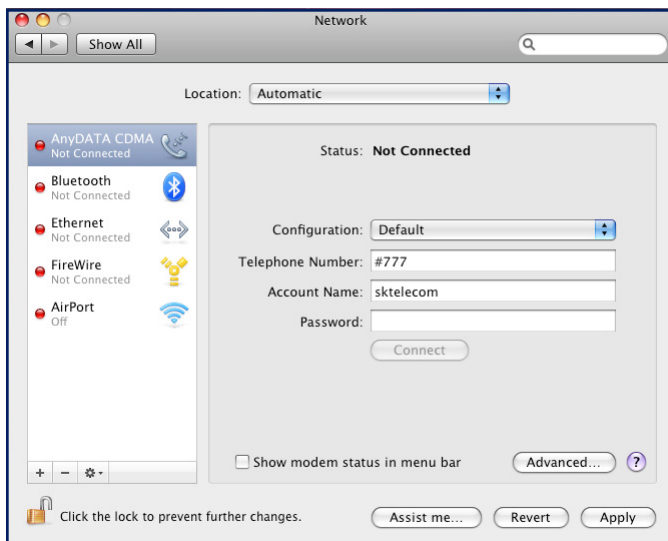


7. Click 'Advanced' on the bottom right of the screen.

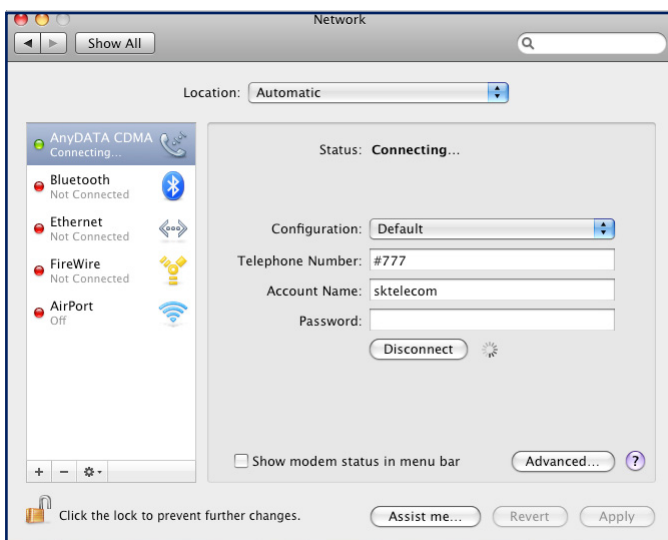
Once following screen appears, select the 'Modem' tab and then click 'AnyDATA' from the Vendor. For Model, 'CDMA' will be selected by default. Click 'OK'.



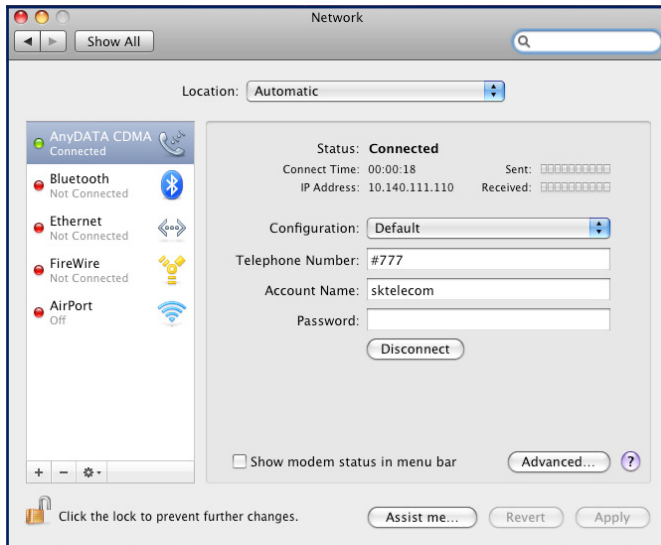
8. If you click 'Apply' on the bottom right of the screen, the 'Connect' button becomes active.



9. Once you click 'Connect', the connection will be established.



10. Once the connection is successfully established, following screen will appear.



11. If you want to disconnect network, click 'Disconnect'.

Caution

1) Removing the AnyDATA communication device from the computer while connecting to network may result in malfunction. Be sure to remove the device after disconnecting to network.

2) When other network such as built-in Ethernet port is enabled, AnyDATA communication device may be prompted with IP authentication wizard twice.

3) If you connect the device to the port other than USB port, you should use the device by installing other communication device.

In this case, click "+" shown in the screen below and install communication device again.

If many of communication device appears as shown in the screen below, you may click '-' to delete them.

